

\$535,000 - 20 Walters Place, Leduc

MLS® #E4429773

\$535,000

4 Bedroom, 3.00 Bathroom, 1,263 sqft
Single Family on 0.00 Acres

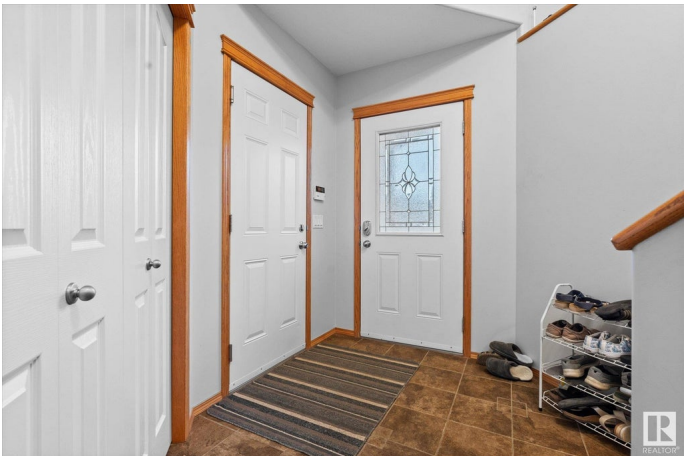
Windrose, Leduc, AB

Designed with comfort and style in mind, this expansive 2005 bi-level is the perfect retreat for a growing family. Offering 4 spacious bedrooms (2 up, 2 down) and 3 full baths, itâ€™s crafted for both function and ease of living. Recent upgrades include a brand new furnace and hot water tank (2024), plus central A/C (2021) for year-round comfort. The bright U-shaped kitchen features a massive pantry and a sunlit dining area with access to a west-facing deckâ€™ideal for summer barbecues. The main floor living room with gas fireplace invites cozy gatherings, while the fully finished lower level boasts a generous rec room with a second fireplace. A 23x28 heated garage provides endless space for projects or storage. The fully fenced yard adds privacy and space to roam. Ideally located near schools, shopping, trails, and the golf course with quick access to Hwy 2 and the airportâ€™lifestyle and location await!

Built in 2005

Essential Information

MLS® #	E4429773
Price	\$535,000
Bedrooms	4
Bathrooms	3.00
Full Baths	3



Square Footage	1,263
Acres	0.00
Year Built	2005
Type	Single Family
Sub-Type	Detached Single Family
Style	Bi-Level
Status	Active

Community Information

Address	20 Walters Place
Area	Leduc
Subdivision	Windrose
City	Leduc
County	ALBERTA
Province	AB
Postal Code	T9E 8S7

Amenities

Amenities	Air Conditioner, Deck, No Smoking Home
Parking	Double Garage Attached, Heated, Insulated, Over Sized

Interior

Interior Features	ensuite bathroom
Appliances	Air Conditioning-Central, Dishwasher-Built-In, Dryer, Garage Control, Garage Opener, Microwave Hood Fan, Refrigerator, Stove-Electric, Washer
Heating	Forced Air-1, Natural Gas
Fireplace	Yes
Fireplaces	Corner
Stories	2
Has Basement	Yes
Basement	Full, Finished

Exterior

Exterior	Wood, Brick, Vinyl
Exterior Features	Airport Nearby, Fenced, Flat Site, Playground Nearby, Schools, Shopping Nearby
Roof	Asphalt Shingles
Construction	Wood, Brick, Vinyl

Foundation Concrete Perimeter

Additional Information

Date Listed April 9th, 2025

Days on Market 32

Zoning Zone 81

DATA IS DEEMED RELIABLE BUT IS NOT GUARANTEED ACCURATE BY THE REALTORS® ASSOCIATION OF EDMONTON. COPYRIGHT 2025 BY THE REALTORS® ASSOCIATION OF EDMONTON. ALL RIGHTS RESERVED.Trademarks are owned or controlled by the Canadian Real Estate Association (CREA) and identify real estate professionals who are members of CREA (REALTOR®, REALTORS®) and/or the quality of services they provide (MLS®, Multiple Listing Service®)

Listing information last updated on May 11th, 2025 at 7:32pm MDT