

\$285,000 - 75 3380 28a Avenue, Edmonton

MLS® #E4432171

\$285,000

3 Bedroom, 2.50 Bathroom, 1,408 sqft

Condo / Townhouse on 0.00 Acres

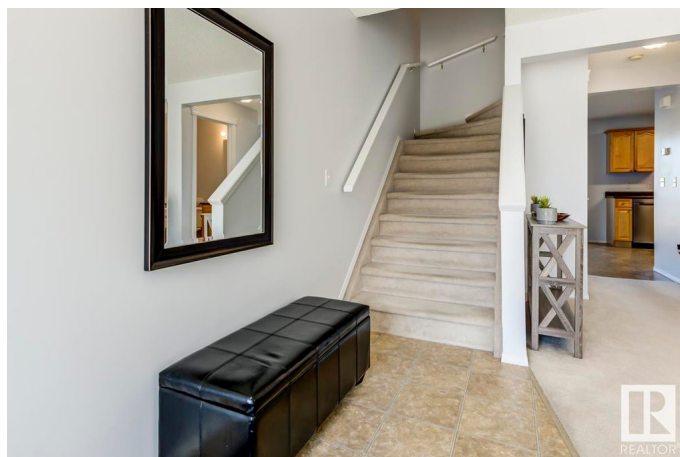
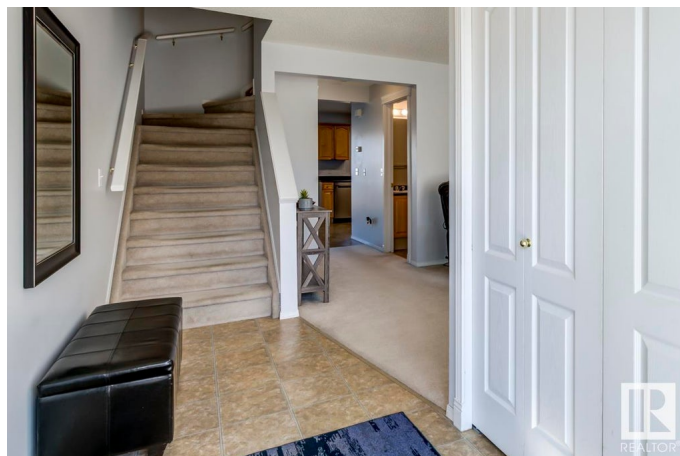
Silver Berry, Edmonton, AB

A great 3-bedroom, 2.5 bath unit ideally located in Silver Berry. Bright and generous family room. Huge kitchen with plenty of counterspace and storage and room for a dinette, walk-in pantry. A Patio door leading to a newer 8x10 deck. Main floor half bath. Upstairs you will find the primary suite is massive with large bright windows, walk-in closet and a 3 piece ensuite. 2 additional bedrooms and a 4 piece bath. Unfinished basement with newer full-sized washer/dryer, newer hot water tank. 2 parking stalls right out front. 2 pets per unit, dogs under <24" at shoulder. Low condo fee of \$310.23. Easy access to Whitemud or Henday. Many shops and restaurants nearby. Not a lot of turn over in this complex-because owners love it there.

Built in 2004

Essential Information

| | |
|----------------|-----------|
| MLS® # | E4432171 |
| Price | \$285,000 |
| Bedrooms | 3 |
| Bathrooms | 2.50 |
| Full Baths | 2 |
| Half Baths | 1 |
| Square Footage | 1,408 |
| Acres | 0.00 |



| | |
|------------|-------------------|
| Year Built | 2004 |
| Type | Condo / Townhouse |
| Sub-Type | Townhouse |
| Style | 2 Storey |
| Status | Active |

Community Information

| | |
|-------------|--------------------|
| Address | 75 3380 28a Avenue |
| Area | Edmonton |
| Subdivision | Silver Berry |
| City | Edmonton |
| County | ALBERTA |
| Province | AB |
| Postal Code | T6T 1V4 |

Amenities

| | |
|-----------|-------------------------------|
| Amenities | Deck |
| Parking | 2 Outdoor Stalls, See Remarks |

Interior

| | |
|-------------------|--|
| Interior Features | ensuite bathroom |
| Appliances | Dishwasher-Built-In, Dryer, Microwave Hood Fan, Refrigerator, Stove-Electric, Washer, Window Coverings |
| Heating | Forced Air-1, Natural Gas |
| Stories | 2 |
| Has Basement | Yes |
| Basement | Full, Unfinished |

Exterior

| | |
|-------------------|--|
| Exterior | Wood, Vinyl |
| Exterior Features | Fenced, Flat Site, Landscaped, Public Transportation, Schools, Shopping Nearby |
| Roof | Asphalt Shingles |
| Construction | Wood, Vinyl |
| Foundation | Concrete Perimeter |

Additional Information

| | |
|----------------|------------------|
| Date Listed | April 23rd, 2025 |
| Days on Market | 15 |

| | |
|-----------|---------|
| Zoning | Zone 30 |
| Condo Fee | \$310 |

DATA IS DEEMED RELIABLE BUT IS NOT GUARANTEED ACCURATE BY THE REALTORS® ASSOCIATION OF EDMONTON. COPYRIGHT 2025 BY THE REALTORS® ASSOCIATION OF EDMONTON. ALL RIGHTS RESERVED. Trademarks are owned or controlled by the Canadian Real Estate Association (CREA) and identify real estate professionals who are members of CREA (REALTOR®, REALTORS®) and/or the quality of services they provide (MLS®, Multiple Listing Service®)

Listing information last updated on May 8th, 2025 at 11:47am MDT