

## \$399,800 - 13028 139st, Edmonton

MLS® #E4451724

### \$399,800

4 Bedroom, 3.00 Bathroom, 1,067 sqft  
Single Family on 0.00 Acres

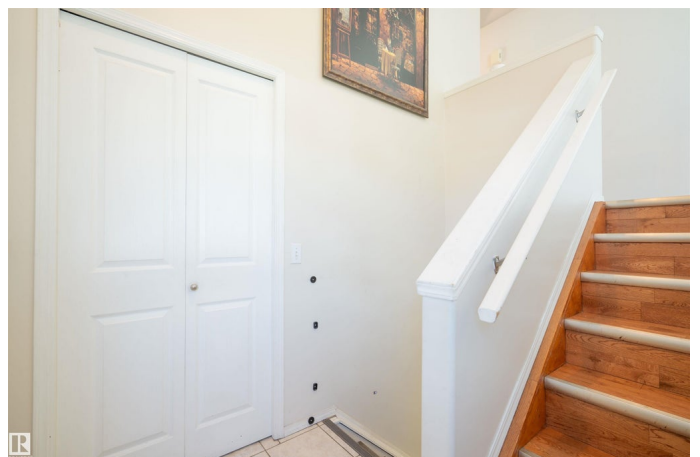
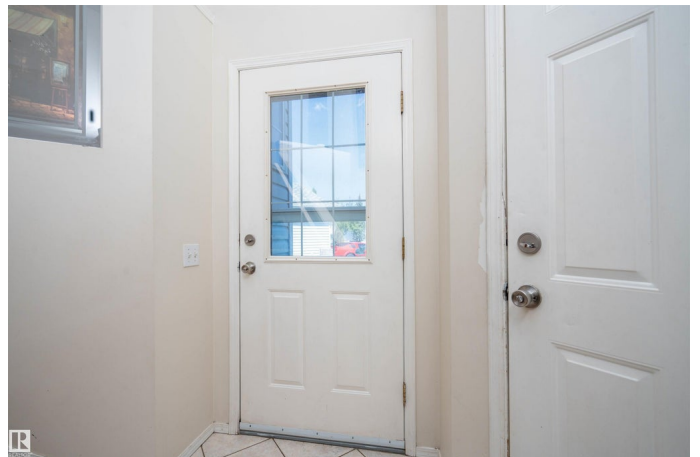
Athlone, Edmonton, AB

Immaculate Bi-Level in Peaceful Dunvegan. No rear neighbors—just tranquility! Welcome to this beautifully maintained 4-bedroom, 3-bathroom home nestled in the quiet and desirable Dunvegan neighborhood. With no houses behind, enjoy added privacy and serene views from your backyard oasis. Bright European-style kitchen with crisp white cabinetry, a spacious pantry, and ample natural light. Gleaming hardwood floors throughout the main level. Large master retreat featuring a private 3-piece ensuite and another spacious bedroom with 4 piece common wash completes the main level. Fully finished basement with a massive family room—perfect for entertaining or relaxing. Two additional lower-level bedrooms, large recreational room and a full 3-piece bathroom. Nicely landscaped, fenced yard ideal for kids, pets, or gardening This home is immaculately maintained and truly move-in ready. Whether you're upsizing, downsizing, or buying your first home, this gem offers comfort, style, and space in a prime location.

Built in 2000

### Essential Information

MLS® #	E4451724
Price	\$399,800



Bedrooms	4
Bathrooms	3.00
Full Baths	3
Square Footage	1,067
Acres	0.00
Year Built	2000
Type	Single Family
Sub-Type	Detached Single Family
Style	2 Storey
Status	Active

### **Community Information**

Address	13028 139st
Area	Edmonton
Subdivision	Athlone
City	Edmonton
County	ALBERTA
Province	AB
Postal Code	T5L 5B8

### **Amenities**

Amenities	Vaulted Ceiling
Parking	Double Garage Attached

### **Interior**

Interior Features	ensuite bathroom
Appliances	Dryer, Hood Fan, Refrigerator, Stove-Electric, Washer, Dishwasher-Two
Heating	Forced Air-1, Natural Gas
Stories	2
Has Basement	Yes
Basement	Full, Finished

### **Exterior**

Exterior	Concrete, Asphalt
Exterior Features	Fenced
Roof	Asphalt Shingles
Construction	Concrete, Asphalt
Foundation	Concrete Perimeter

### **Additional Information**

Date Listed August 7th, 2025

Days on Market 10

Zoning Zone 01

DATA IS DEEMED RELIABLE BUT IS NOT GUARANTEED ACCURATE BY THE REALTORS® ASSOCIATION OF EDMONTON. COPYRIGHT 2025 BY THE REALTORS® ASSOCIATION OF EDMONTON. ALL RIGHTS RESERVED. Trademarks are owned or controlled by the Canadian Real Estate Association (CREA) and identify real estate professionals who are members of CREA (REALTOR®, REALTORS®) and/or the quality of services they provide (MLS®, Multiple Listing Service®)

Listing information last updated on August 17th, 2025 at 7:17am MDT