

\$1,100,000 - 253 Wilson Lane, Edmonton

MLS® #E4458276

\$1,100,000

4 Bedroom, 3.50 Bathroom, 2,446 sqft

Single Family on 0.00 Acres

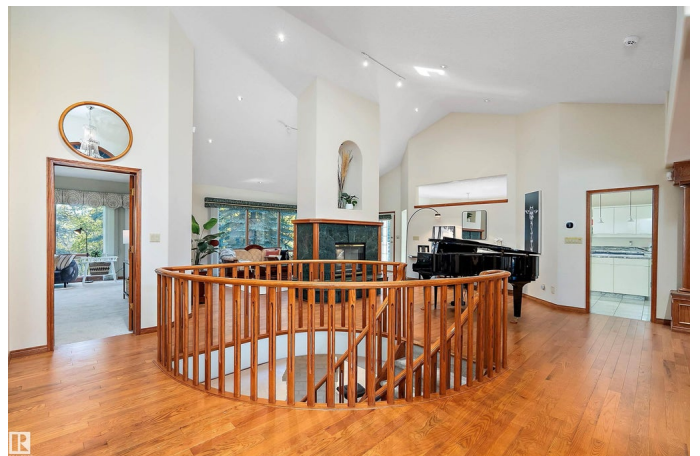
Oleskiw, Edmonton, AB

Steps from Edmonton Country Club & the River Valley, this custom walkout bungalow blends timeless design with a true luxury lifestyle. Dramatic curved staircase, soaring ceilings & walls of windows capture treed views while connecting open living, dining & family spaces—perfect for entertaining. The chef’s kitchen with granite, island & breakfast nook flows seamlessly to a patio overlooking mature landscaping. A private main floor den, laundry & powder room add convenience. The main floor primary bedroom features a spa ensuite w/jetted tub, dual vanities & walk-in closet. The fully finished walkout offers 3 bedrooms, 2 baths, rec room w/fireplace, full 2nd kitchen & dining plus a dedicated theatre. Step out to a stone patio with built-in BBQ amid lush greenery & winding paths. Oversized 3-car garage ensures comfort. Features stairway from garage to basement! Nestled in a quiet cul-de-sac minutes to top schools, shopping & River Valley trails—this is estate living redefined. A chance of a lifetime! Hurry!

Built in 1992

Essential Information

MLS® #	E4458276
Price	\$1,100,000



Bedrooms	4
Bathrooms	3.50
Full Baths	3
Half Baths	1
Square Footage	2,446
Acres	0.00
Year Built	1992
Type	Single Family
Sub-Type	Detached Single Family
Style	Bungalow
Status	Active

Community Information

Address	253 Wilson Lane
Area	Edmonton
Subdivision	Oleskiw
City	Edmonton
County	ALBERTA
Province	AB
Postal Code	T6M 2K8

Amenities

Amenities	Air Conditioner, Closet Organizers, No Animal Home, No Smoking Home, Parking-Extra, Vaulted Ceiling, Walkout Basement, See Remarks
Parking	Triple Garage Attached

Interior

Interior Features	ensuite bathroom
Appliances	Air Conditioning-Central, Dryer, Hood Fan, Microwave Hood Fan, Oven-Microwave, Stove-Countertop Gas, Stove-Electric, Washer, Refrigerators-Two, Dishwasher-Two, Projector
Heating	Forced Air-1, Natural Gas
Stories	2
Has Basement	Yes
Basement	Full, Finished

Exterior

Exterior	Wood, Stucco
Exterior Features	Backs Onto Park/Trees, Cul-De-Sac, Fenced, Golf Nearby, Landscaped,

Public Transportation, Shopping Nearby, See Remarks

Roof	Concrete Tiles
Construction	Wood, Stucco
Foundation	Concrete Perimeter

School Information

Elementary	Patricia Heights School
Middle	Hillcrest School
High	Jasper Place School

Additional Information

Date Listed	September 18th, 2025
Days on Market	10
Zoning	Zone 22

DATA IS DEEMED RELIABLE BUT IS NOT GUARANTEED ACCURATE BY THE REALTORS® ASSOCIATION OF EDMONTON. COPYRIGHT 2025 BY THE REALTORS® ASSOCIATION OF EDMONTON. ALL RIGHTS RESERVED.Trademarks are owned or controlled by the Canadian Real Estate Association (CREA) and identify real estate professionals who are members of CREA (REALTOR®, REALTORS®) and/or the quality of services they provide (MLS®, Multiple Listing Service®)

Listing information last updated on September 28th, 2025 at 7:02am MDT